



State of New Hampshire
Forensic Hospital Informational
Meeting

03/28/2022

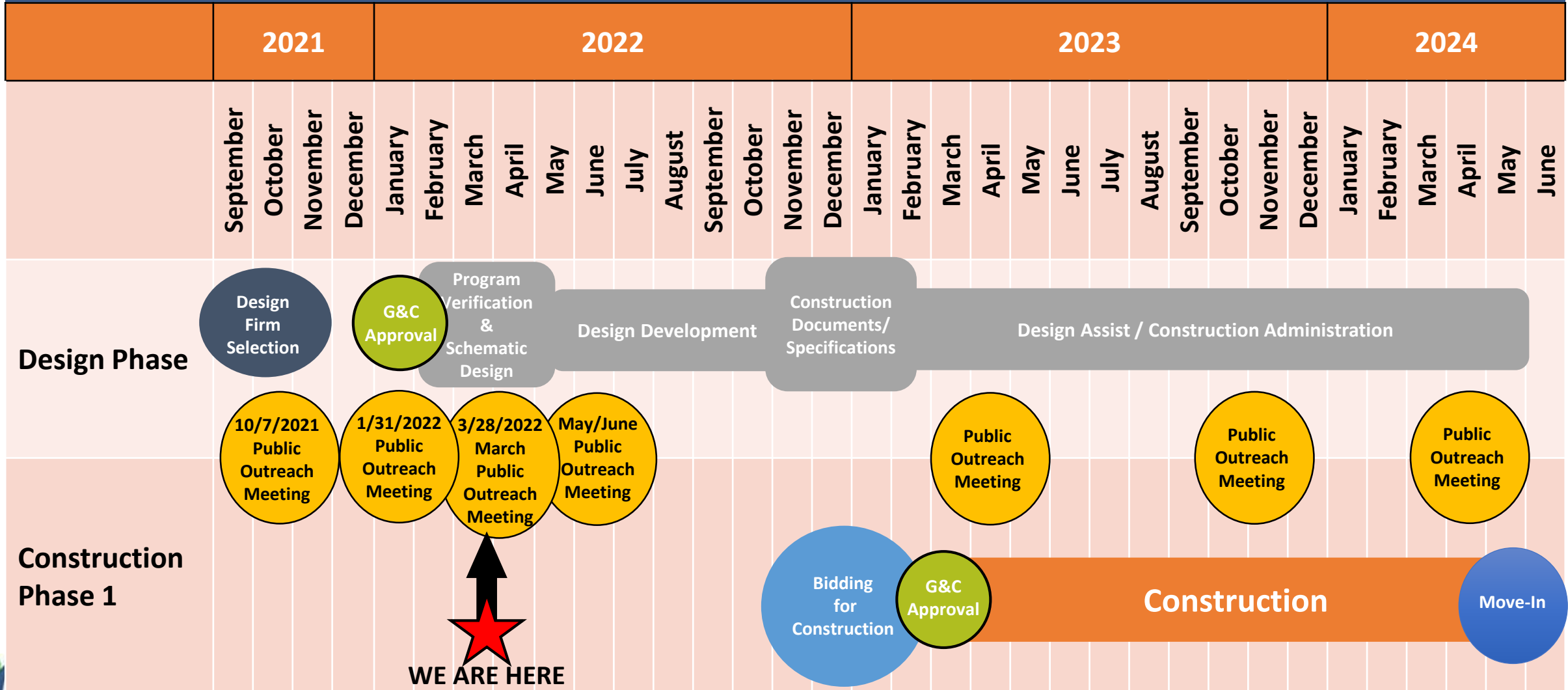
6pm



Agenda

- Forensic Hospital Design/Construction Timeline
- Design Process & Progress Update
- Response to questions from previous Information Session
 - Examples of Psychiatric Forensic Facilities in other communities
- Q&A

Forensic Hospital Design/Construction Timeline





SMRT & architecture+

- 25+ years of team collaboration
- fully integrated A/E team
- international expertise, local talent



Vermont Psychiatric Care Hospital
architecture+ & SMRT

SMRT & architecture+



Architecture



Engineering



Planning



Interiors



Energy

You'll love how we work together.

We're a team of architects, engineers, planners and professionals committed to solving problems through design and positioning our clients for success. We design for what is next, using the power of design to successfully position our communities for the future, fueled by curiosity, inquiry, and passion.

Creating spaces that inspire people to live, work, and play together.

We serve our clients through the creation of resonantly beautiful places resulting from a creative response to community, a client's mission, and a building's own circumstance; all within the context of service.

Why SMRT & architecture+?

- Passionate about mental health design
- Invested in your success
- Safe, secure, and optimized solutions
- Designing for your future
- Managed on time & on budget
- Documented Quality Assurance Plan
- All-star team without the all-star attitude

Most positively, numerous ‘program resistant’ patients are now actively pursuing an array of therapeutic programs daily. This outcome is at the very heart of the building’s renovation...it’s about people and their lives.”

Kathleen Herron, Deputy Director for Administration
Hutchings Psychiatric Center | Office of Mental Health

Design Process & Progress Update

New Hampshire

Secure Psychiatric Forensic Hospital

- Guiding Principles
- Design Direction
- Building Area Limits; Analysis & Test Fit
- Views

SMaRT Delivery



- **Articulate project goals & priorities**
- **Confirm space program**
- **Assess site limitations & opportunities**
 - Utilities, soils, parking, traffic, water management, features & amenities including visual impact and views
- **Review conceptual design options**
 - Building footprints, locations, organizational diagrams & massing, energy performance analysis
- **Select design direction**

Design Process Guiding Principles

Aesthetically
Pleasing

Enhance
Site &
Amenities

Efficient
Space
Utilization

Energy
Efficient
Facility

Optimize
Workflows

Responds to
stakeholder
feedback

Supportive/
Therapeutic
Spaces

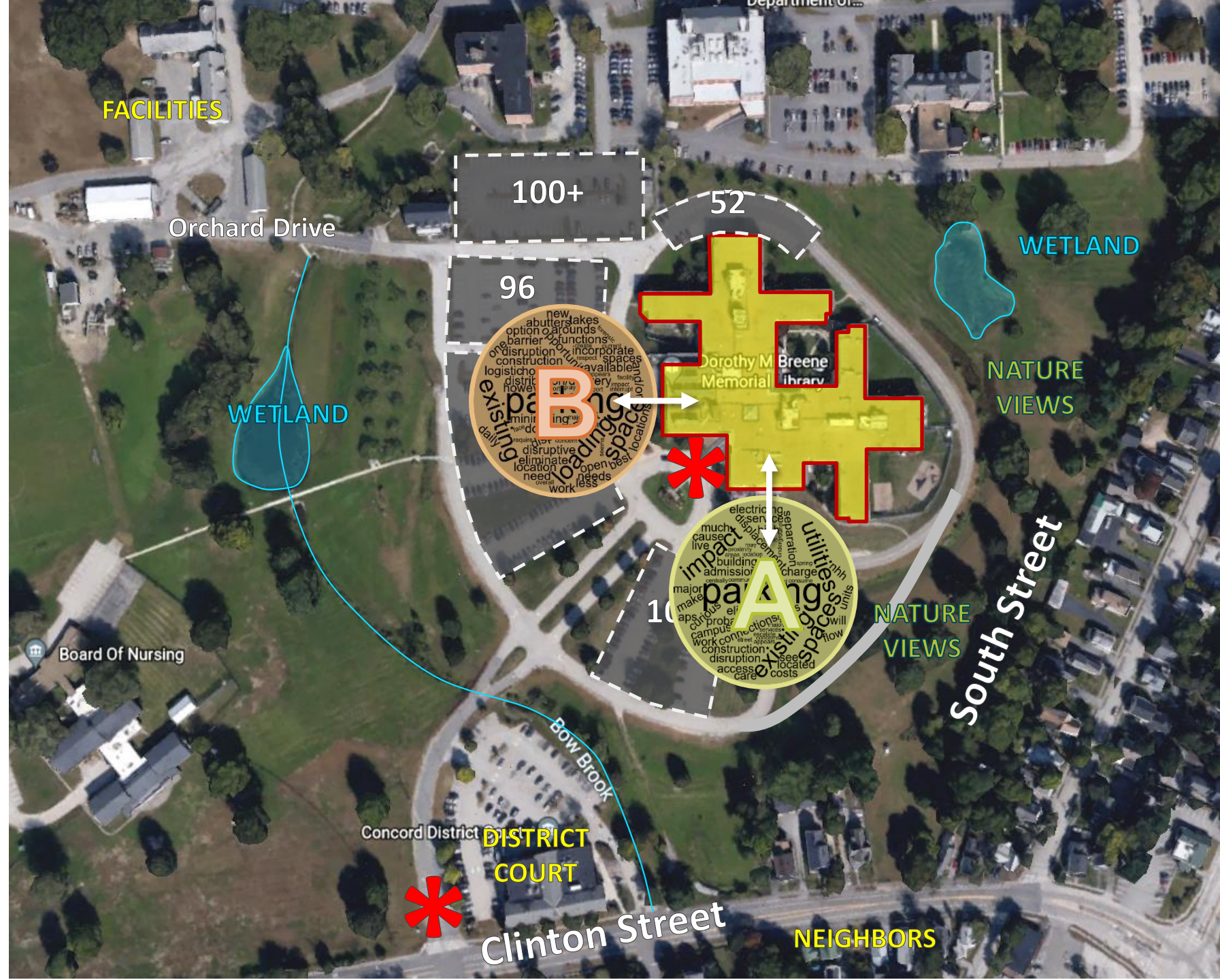
Secure, safe
& calm

Design Direction

- **Efficient** footprint & building envelope (least permeable area, least disruption, least parking displacement)
- **Ensure community safety** within the facility design
- **Direct visitors to a single front door** with security
- **Preserve or enhance existing site** character
- **Minimize disruption** to existing operations, patients and neighbors
- Provide **clear intent for future** expansion location/tie-in
- Invite & incorporate **broad stakeholder input**.



Site Location Options



“A” Area

CHALLENGES

- Water Line

OPPORTUNITIES

- Limit to extents of developed area
- No work outside of ring road
- Best operational adjacencies



“B” Area

CHALLENGES

- Water Mains
- Sewer Line
- Electrical Service
- Gas Lines
- Fuel tanks
- Mechanical ventilation
- Admitting Department
- Inpatient Stabilization Unit
- Splits parking areas

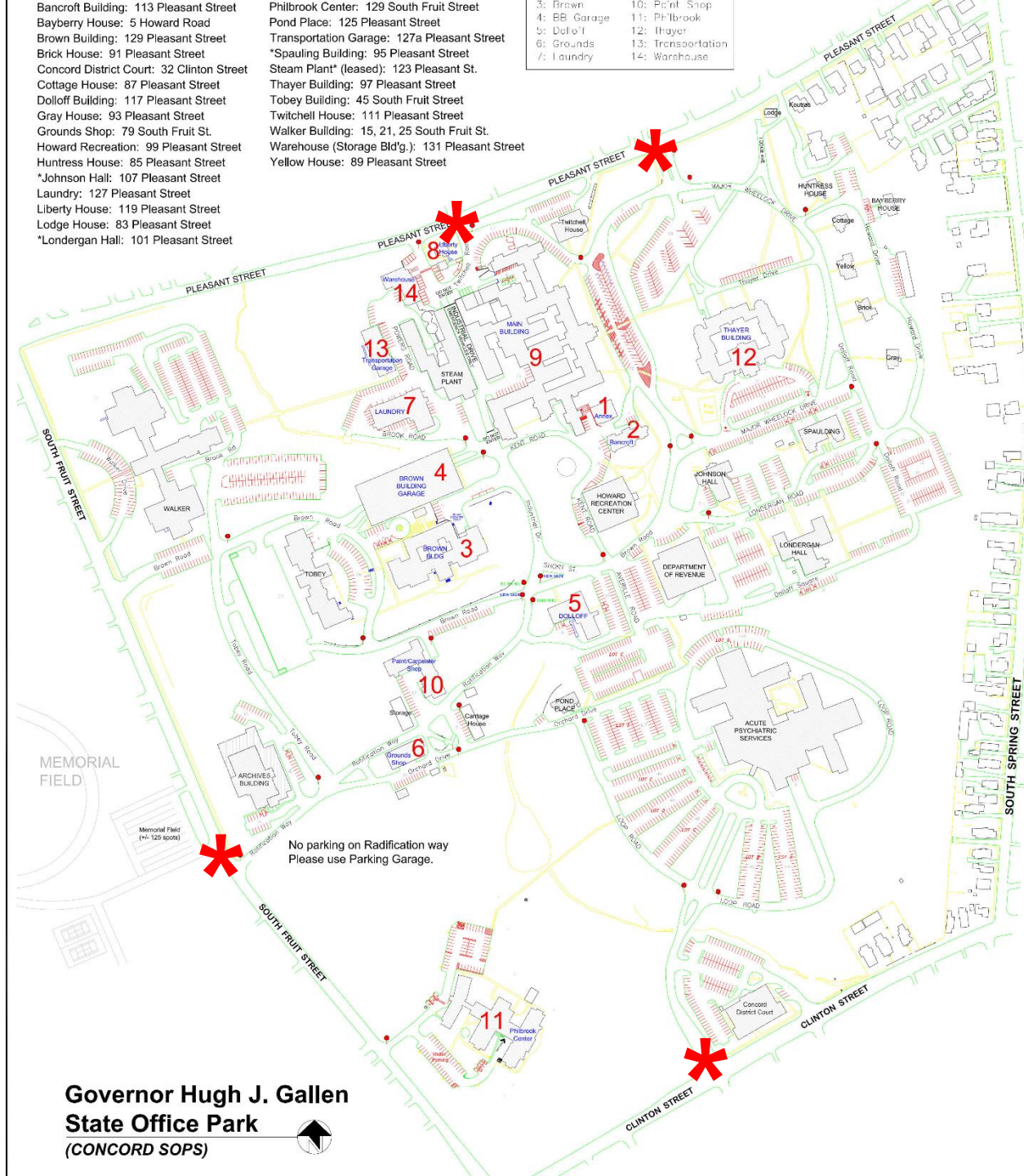
OPPORTUNITIES

- Larger footprint area
- No work outside ring road



Parking & Traffic

- Traffic study surrounding campus
 - Considering nearby factors & internal (schools, shift work, etc)
- Parking study throughout campus
 - Total demand & Utilization by location
 - Analyze for overall needs & distribution
- This project initiated the study, but solutions beyond those meeting the project needs would be addressed separately.



Design Team
recommendation:
Limit Building extents to
Area "A":



Board of Mental
Health Practice

Concord District Court

NHH view from South Fruit St



NHH – view from Clinton St



NHH – approach

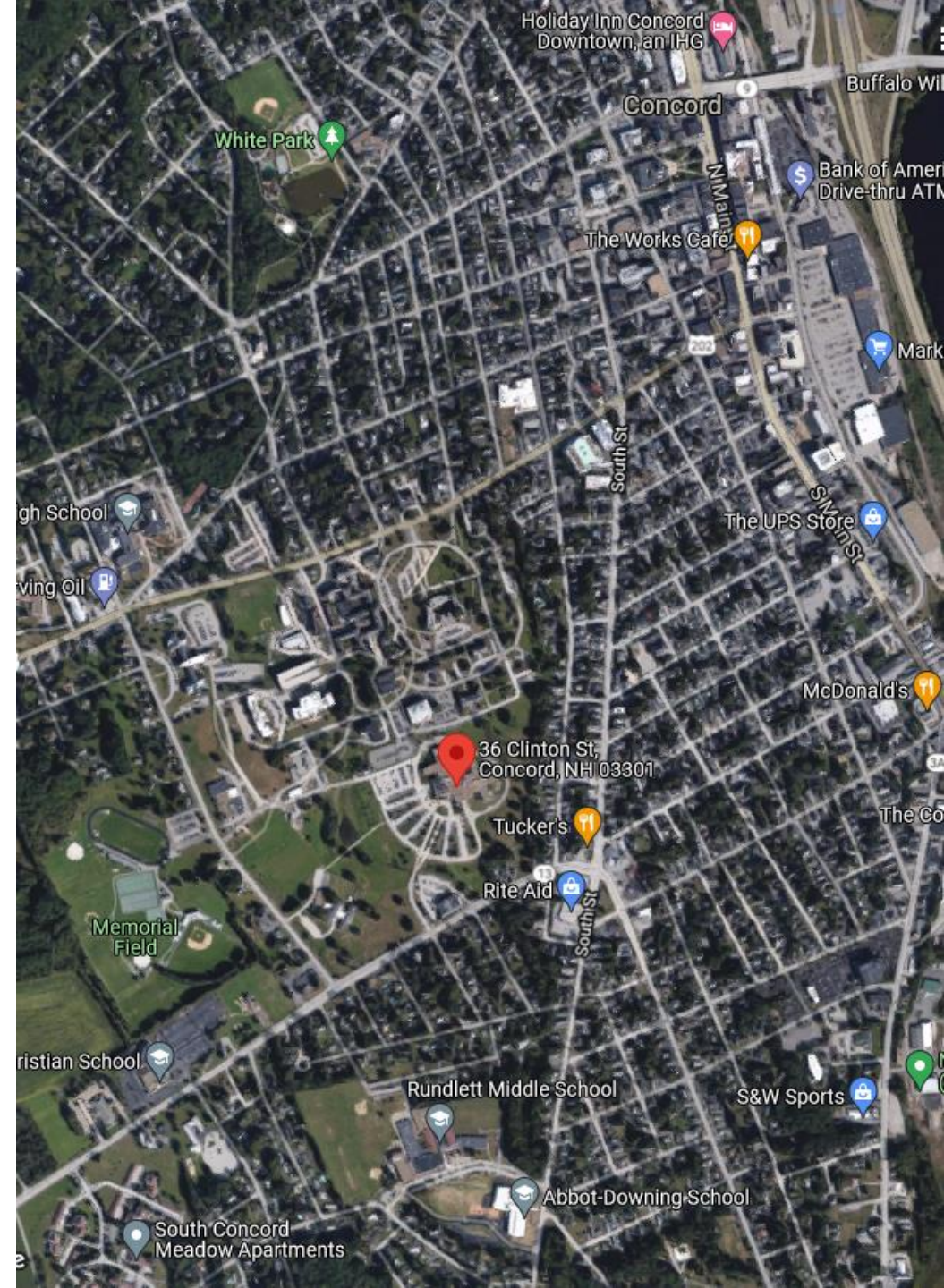


Previous Public Session Input & Questions

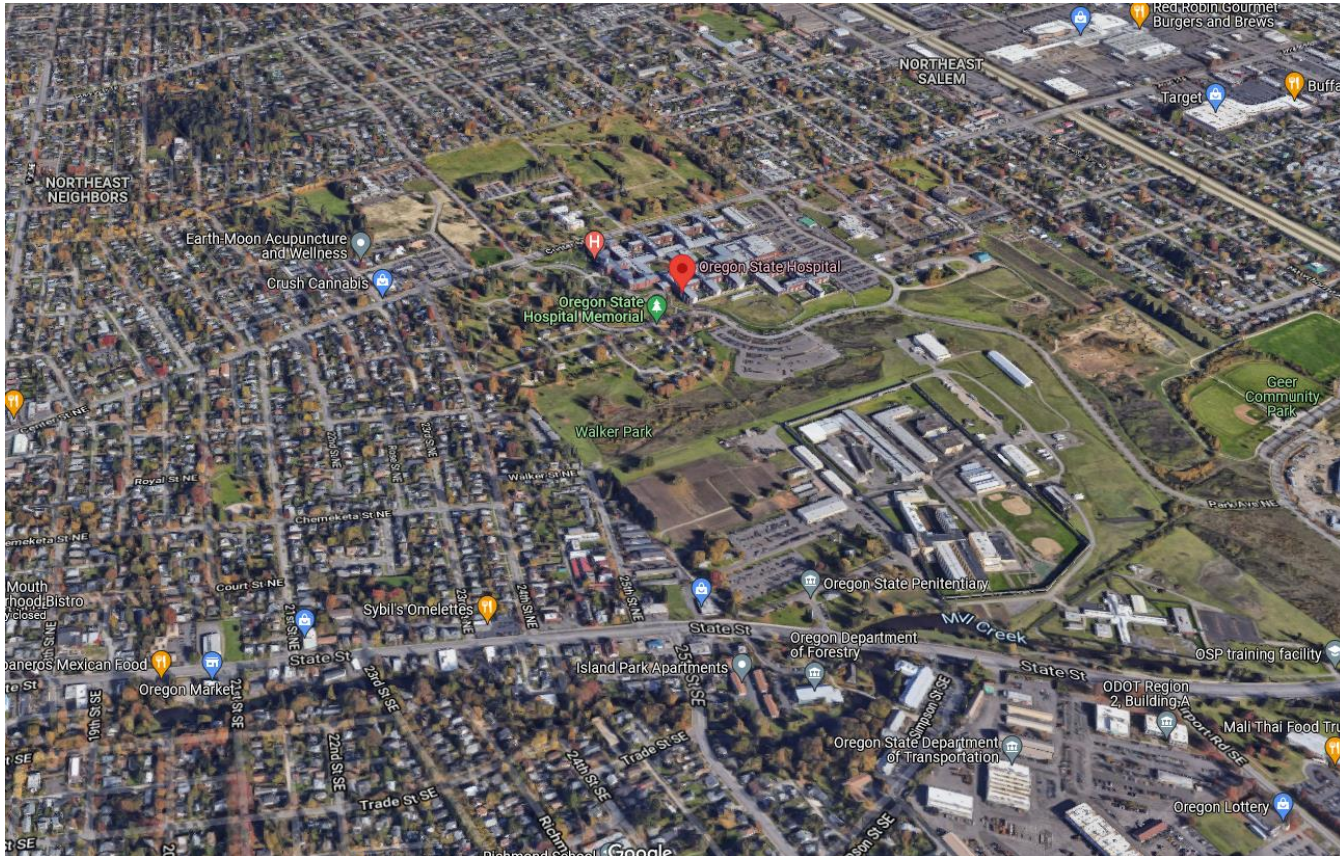
- Secure Psychiatric Forensic Hospitals in neighborhood locations?
 - [sometimes; provide examples]
- What does SPFH (high-security) look like physically/aesthetically?
 - [fenced or incorporated into building]
- Parking & Traffic
 - [study beginning soon]
- Site amenities and community use



New Hampshire Hospital



Oregon State Hosp (Salem OR)

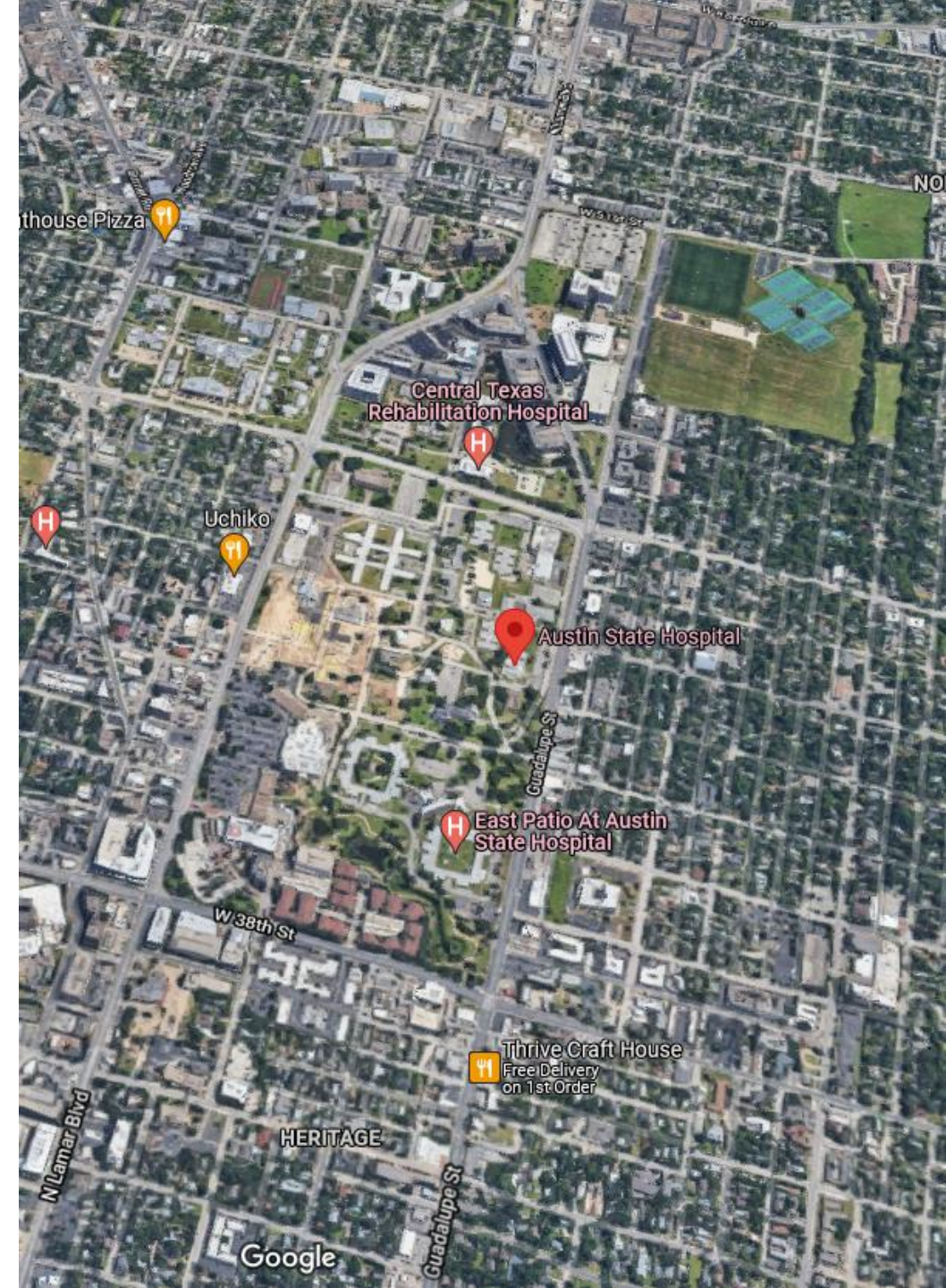


architecture+

Oregon State Hosp (Salem OR)

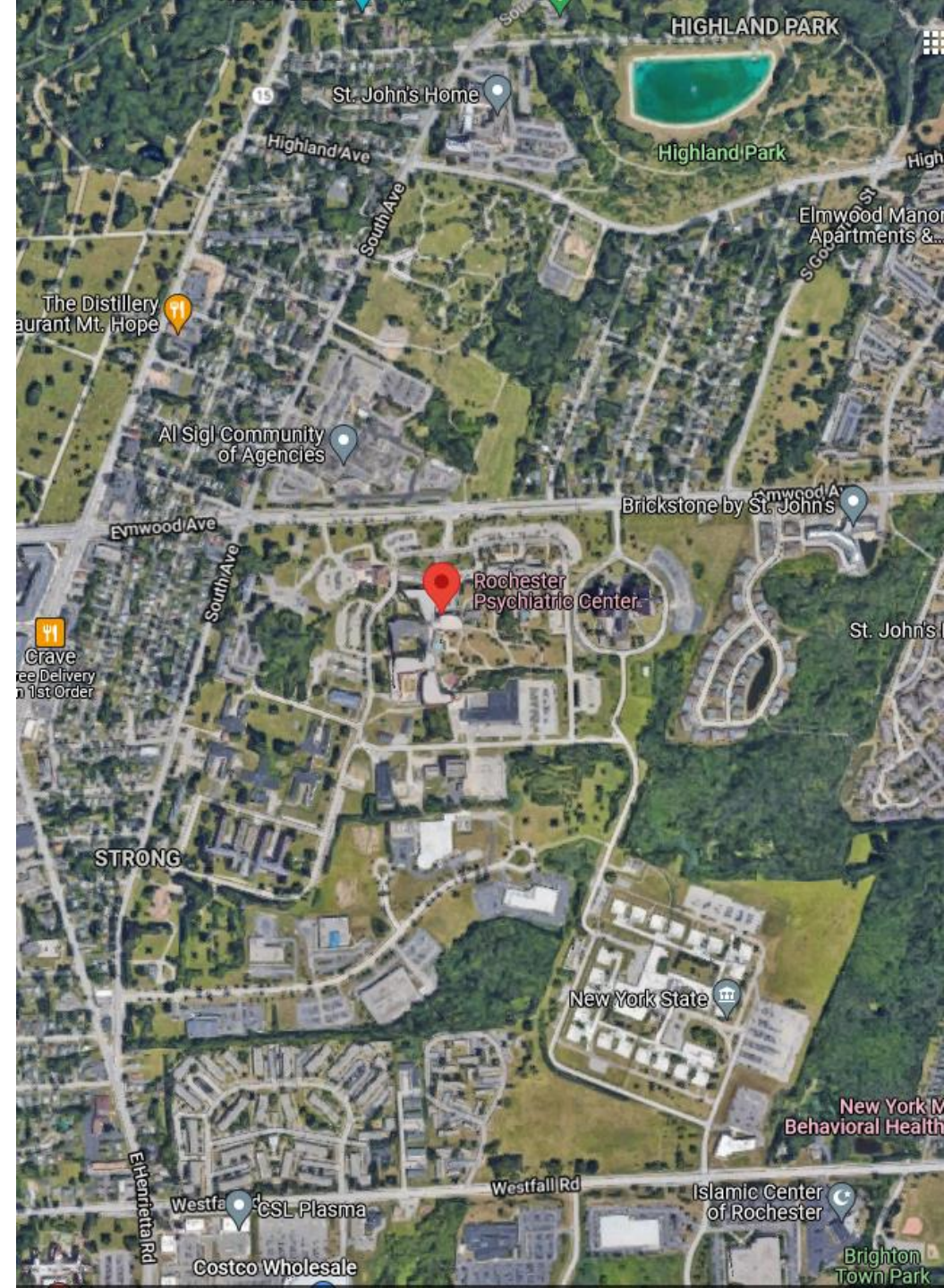


Austin State Hospital (TX)

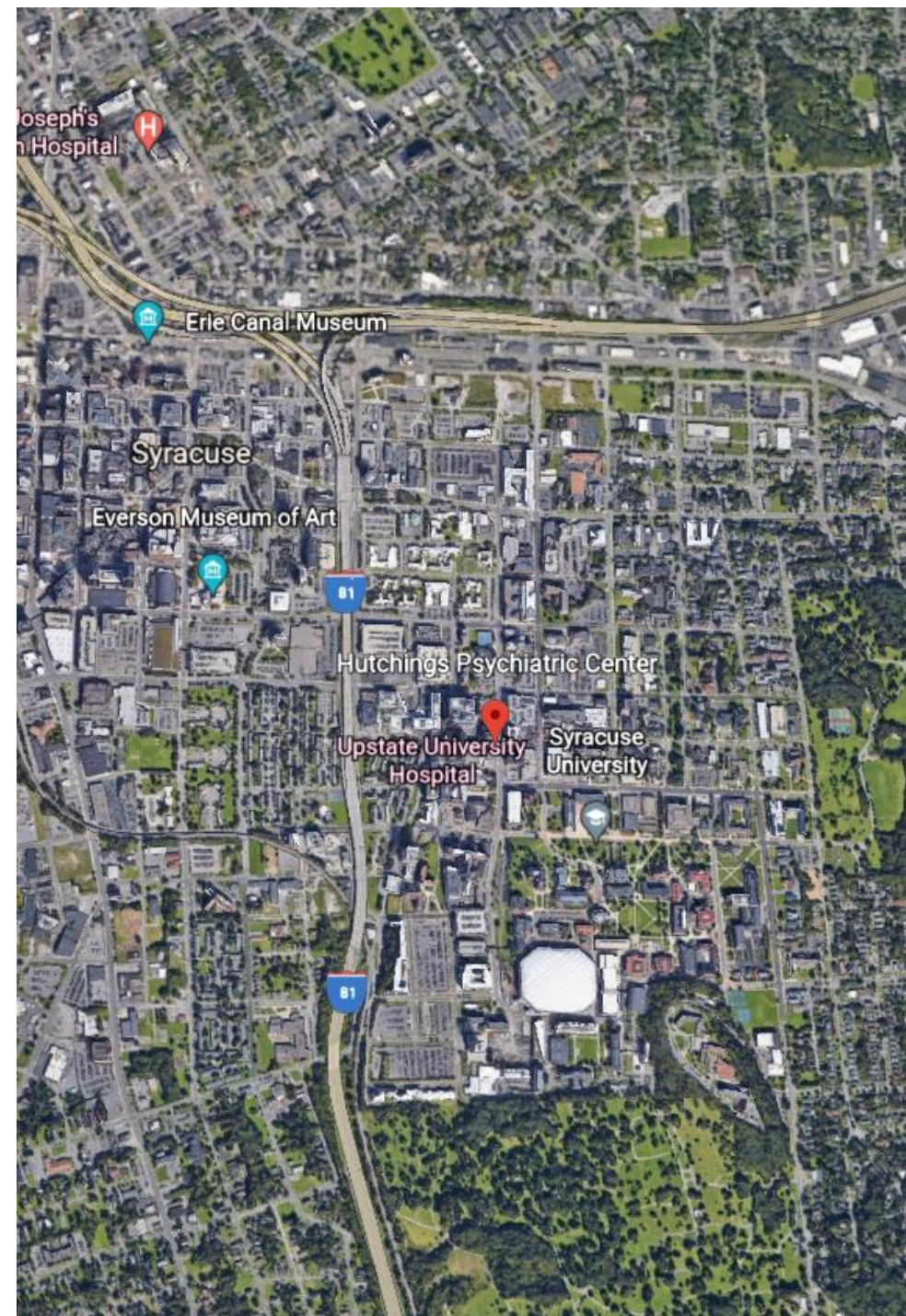


architecture+

Rochester Psych Center (NY)

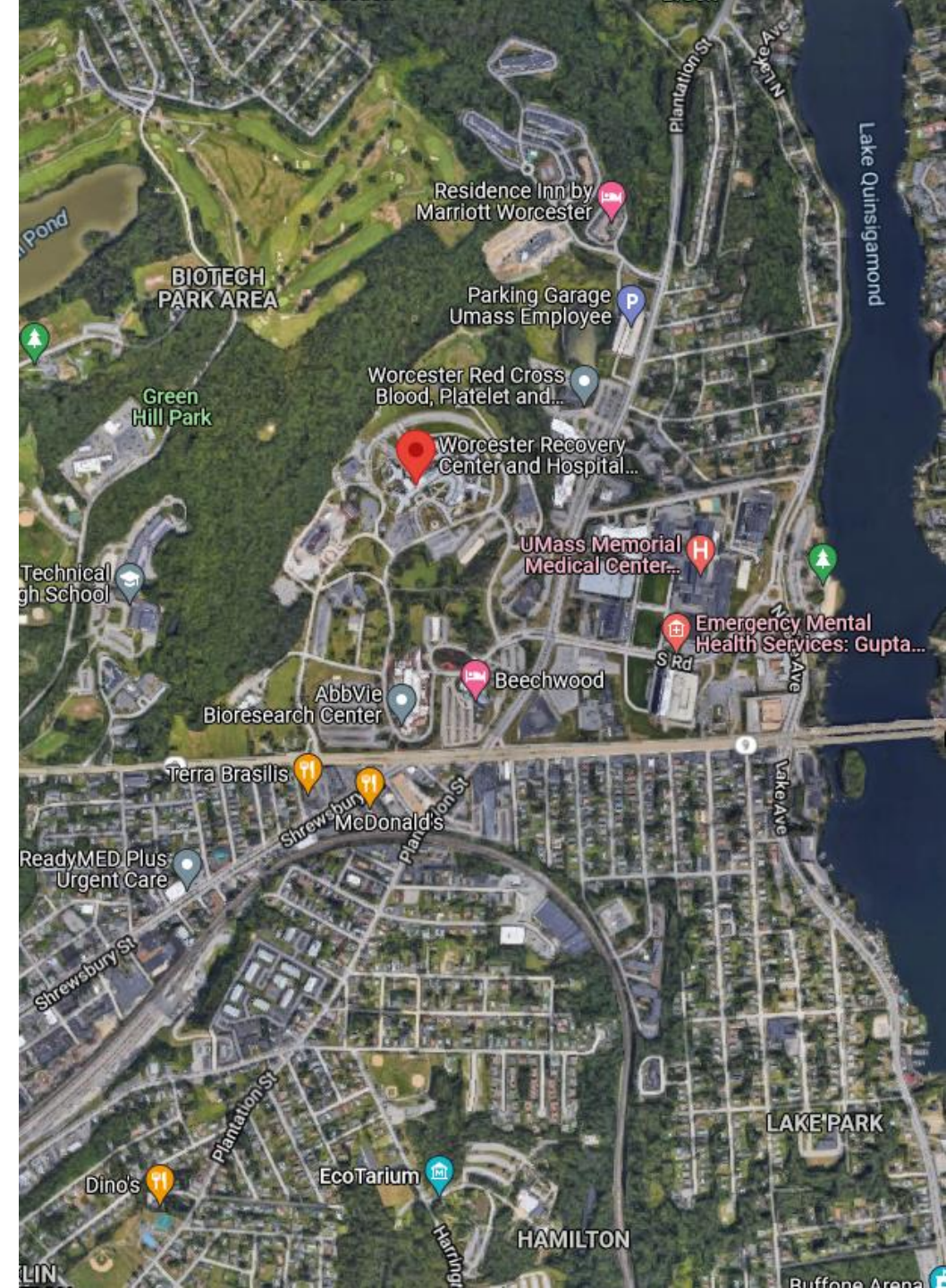


Hutchings Psychiatric Ctr (Syracuse, NY)



architecture+

Worcester Recovery Ctr (MA)



Worcester Recovery Ctr



Vermont Psychiatric Care Hospital (Berlin VT)



Vermont Psychiatric Care Hospital (Berlin VT)



Q&A

Link for this evenings presentation:

[https://www.dhhs.nh.gov/dcbcs/nhh/
forensic-hospital-sessions.htm](https://www.dhhs.nh.gov/dcbcs/nhh/forensic-hospital-sessions.htm)